

# PLAN OF SUBDIVISION OF PART OF RIVER LOTS 5 TO 9 BOTH INCLUSIVE PARISH OF ST. PAUL

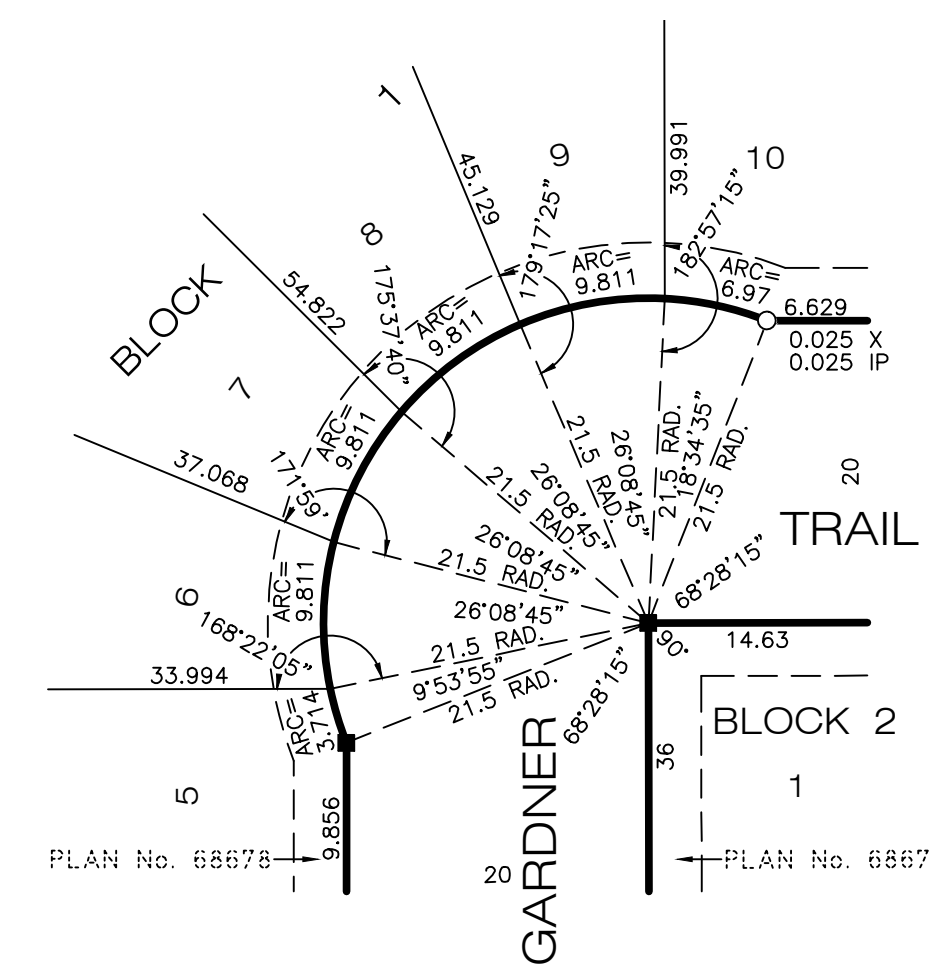
BEING  
PT. LOT 2, LOT 3 BLOCK 8, LOT 2 BLOCK 10,  
LOTS 1 AND 2 BLOCK 11, PLAN NO. 68671  
PT. LOT 3 BLOCK 1, LOTS 1 AND 2 BLOCK 5,  
LOT 3 BLOCK 14, LOTS 1 AND 2 BLOCK 15,  
PT. BLOCK 8, PLAN NO. 68672

RM OF WEST ST. PAUL

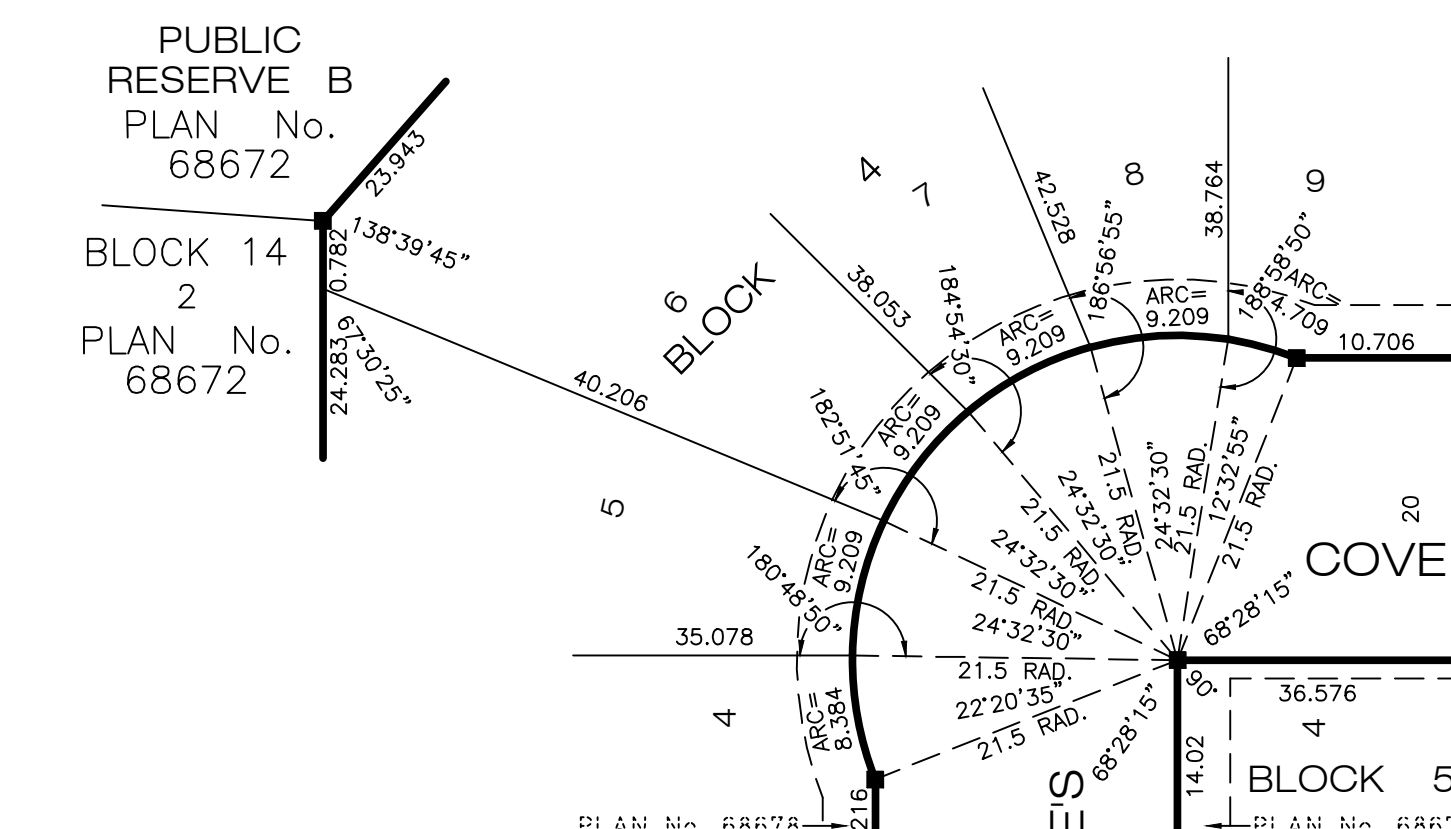
MANITOBA

SCALE 1 : 1500

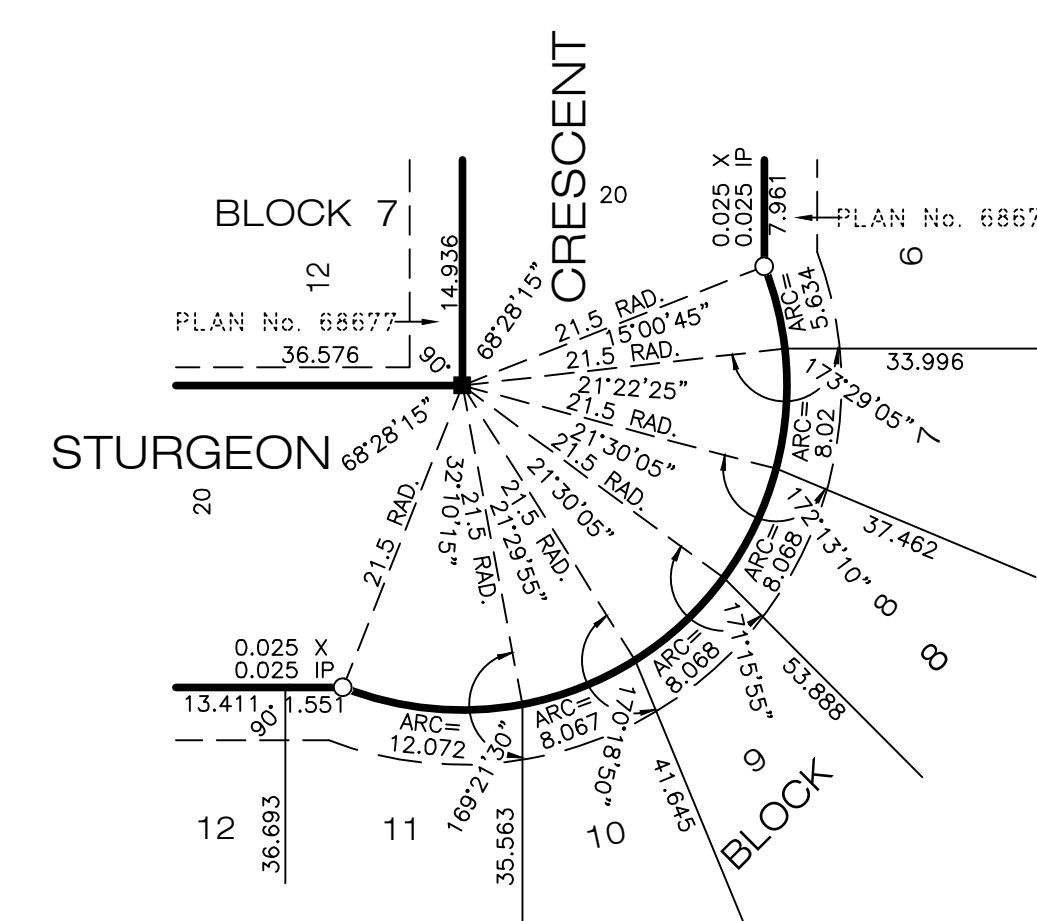
METRIC



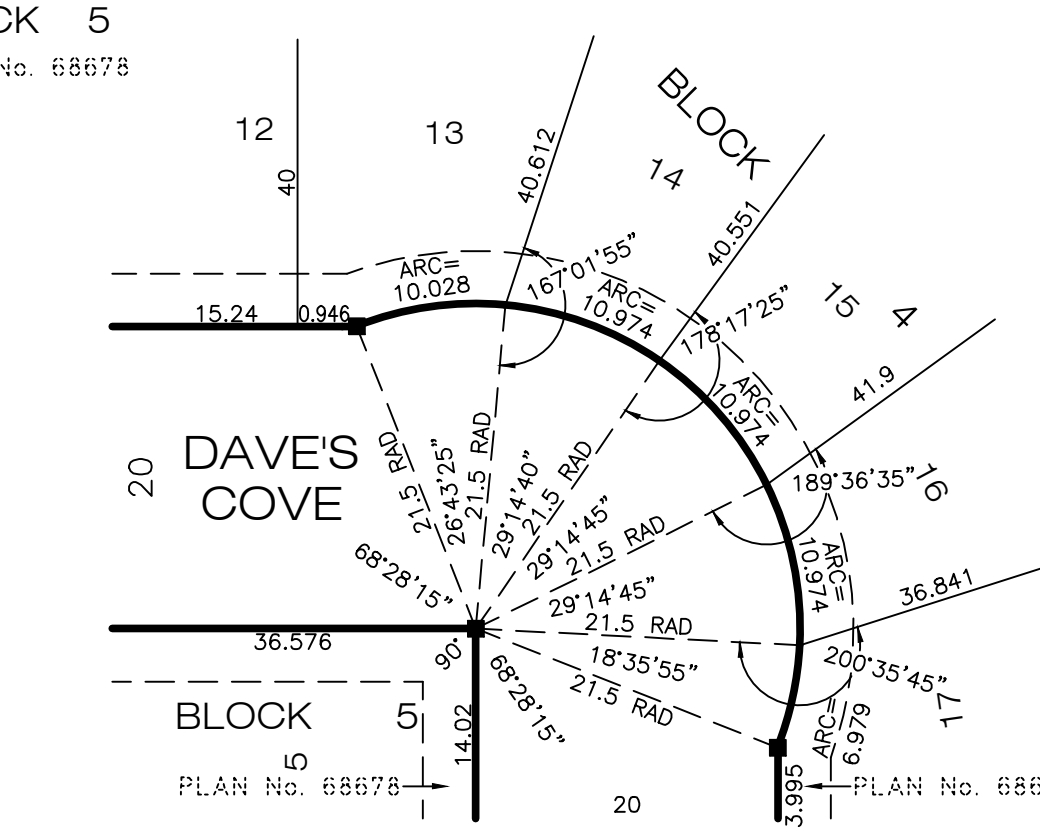
DETAIL AT 'D'  
NOT TO SCALE



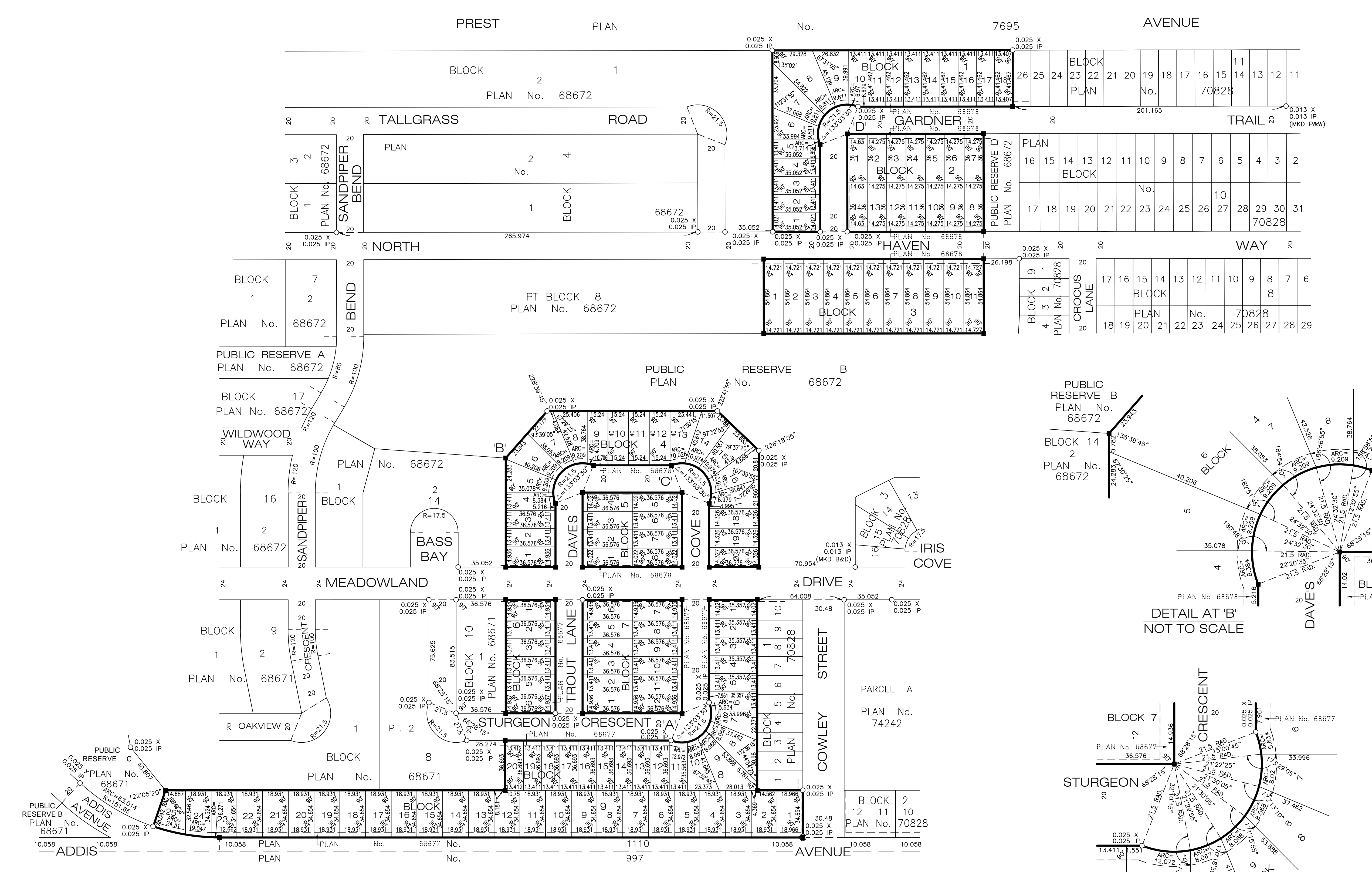
DETAIL AT 'B'  
NOT TO SCALE



DETAIL AT 'A'  
NOT TO SCALE



DETAIL AT 'C'  
NOT TO SCALE



### NOTES

- ALL DISTANCES ARE IN METRES AND MAY BE CONVERTED TO FEET BY MULTIPLYING BY 3.28084.
- SURVEY MONUMENTS FOUND ON THE GROUND ARE DESCRIBED AND SHOWN THUS
- IRON POSTS 0.025 x 0.025 x 0.914 MARKED "M.L.S." ARE PLACED AT ALL POINTS SHOWN THUS
- LAND AFFECTED BY THE REGISTRATION OF THIS PLAN IS SHOWN BORDERED THUS
- ALL PLANS REFERRED TO ARE ON RECORD IN THE WINNIPEG LAND TITLES OFFICE.

### AFFIDAVIT

I, LESLIE NEIL McLAUGHLIN, M.L.S., OF THE CITY OF WINNIPEG, MANITOBA LAND SURVEYOR, MAKE OATH AND SAY THAT I DID PERSONALLY SUPERINTEND THE SURVEY REPRESENTED BY THIS PLAN, THAT THE SURVEY WAS MADE BETWEEN THE 30TH DAY OF OCTOBER, A.D. 2024, AND THE 7TH DAY OF NOVEMBER, A.D. 2024, AND THAT THE SURVEY AND PLAN ARE CORRECT AND TRUE TO THE BEST OF MY KNOWLEDGE AND BELIEF.

SWORN TO BEFORE ME AT THE CITY OF WINNIPEG

MANITOBA LAND SURVEYOR

THIS 22ND DAY OF JANUARY, A.D. 2025

A SURVEYOR AUTHORIZED TO PRACTISE UNDER "THE LAND SURVEYORS ACT"

### APPROVALS

APPROVED BY PLANNING CERTIFICATE OF APPROVAL No. \_\_\_\_\_ THIS \_\_\_\_\_ DAY OF \_\_\_\_\_ 20\_\_

EXECUTIVE DIRECTOR  
RED RIVER PLANNING DISTRICT BOARD

THIS APPROVAL IS VALID FOR 60 DAYS UNLESS REGISTERED.  
APPROVED THIS \_\_\_\_\_ DAY OF \_\_\_\_\_, 20\_\_  
FOR REGISTRAR GENERAL  
RE-APPROVED THIS \_\_\_\_\_ DAY OF \_\_\_\_\_, 20\_\_  
FOR REGISTRAR GENERAL

ENTERED AND REGISTERED IN THE WINNIPEG LAND TITLES OFFICE  
THIS \_\_\_\_\_ DAY OF \_\_\_\_\_, 20\_\_  
AS PLAN No. \_\_\_\_\_  
FOR "DISTRICT" REGISTRAR  
REGISTRATION No. \_\_\_\_\_

OWNERS (IF SIGNING ON BEHALF OF A CORPORATION, PRINT THE DESIGNATION OF OFFICE.)  
(PRINT NAME) (SIGNATURE)  
(PRINT NAME) (SIGNATURE)  
(PRINT NAME) (SIGNATURE)  
THIS APPROVAL IS VALID FOR 12 MONTHS UNLESS REGISTERED.  
APPROVED THIS \_\_\_\_\_ DAY OF \_\_\_\_\_, 20\_\_  
EXAMINER OF "SURVEYS"  
RE-APPROVED THIS \_\_\_\_\_ DAY OF \_\_\_\_\_, 20\_\_  
EXAMINER OF "SURVEYS"

MUN. P.F. NO.: S24-3053

**BARNES & DUNCAN**  
SURVEYING, ENGINEERING & PLANNING

6 DONALD STREET  
WINNIPEG, MANITOBA  
R5L 0K0  
FILE: 23-0968  
DWG: 23-0968 MEADOWLANDS  
PHASE 3 SUBDIVISION  
FB: B&D 1633 23/25

IR

SPECIAL SURVEY PARISH OF ST. PAUL NO. 3392